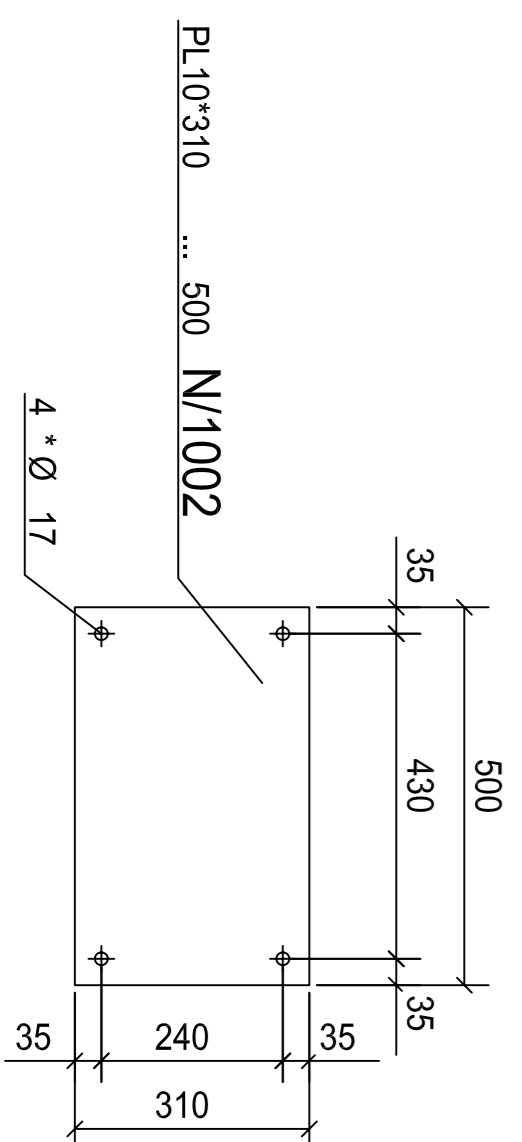
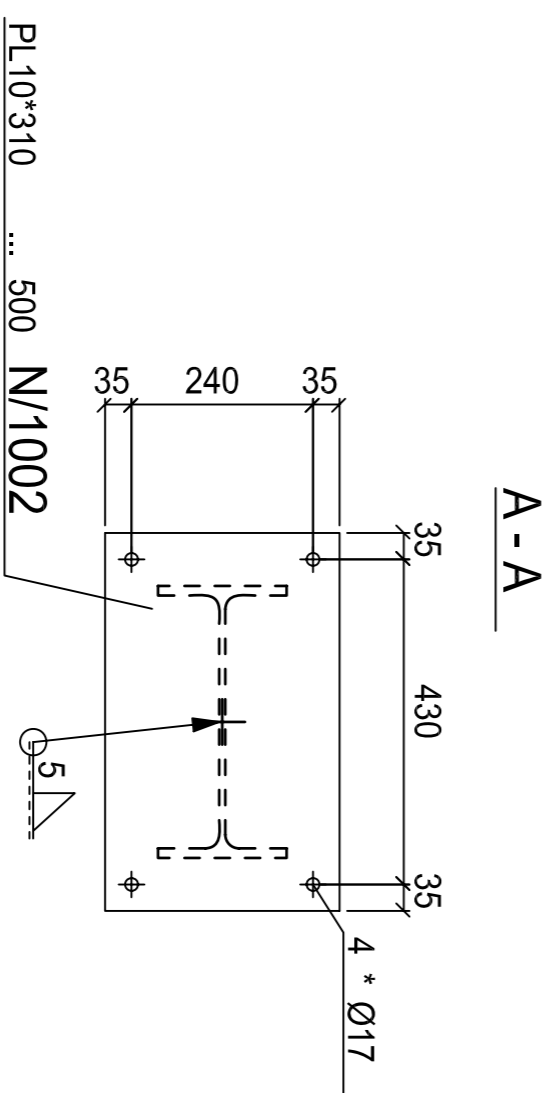
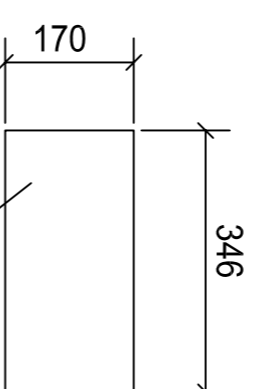
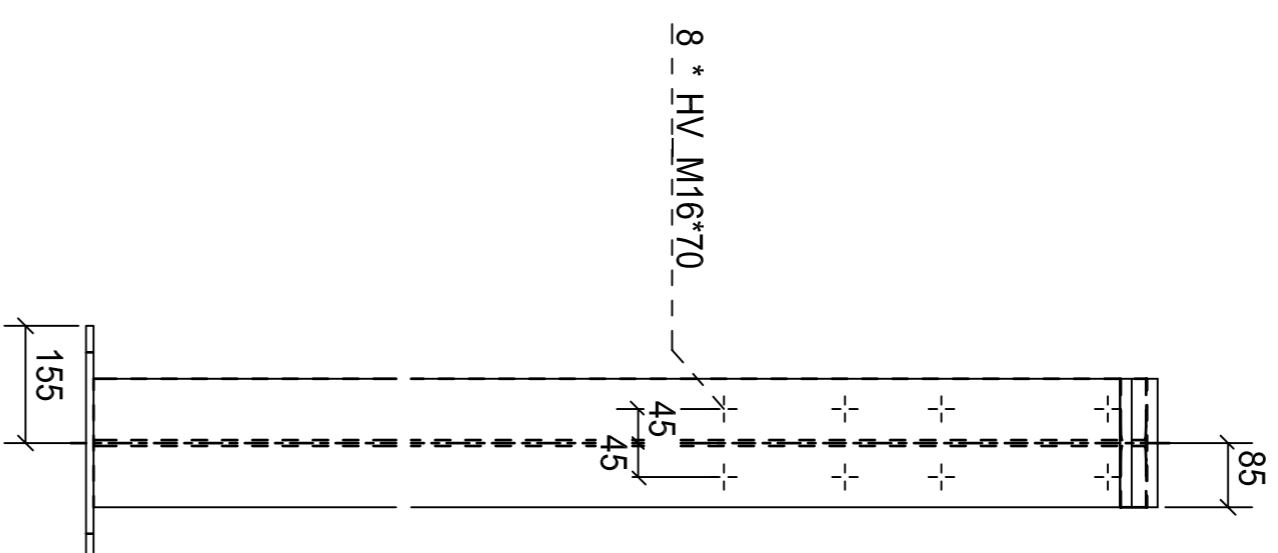
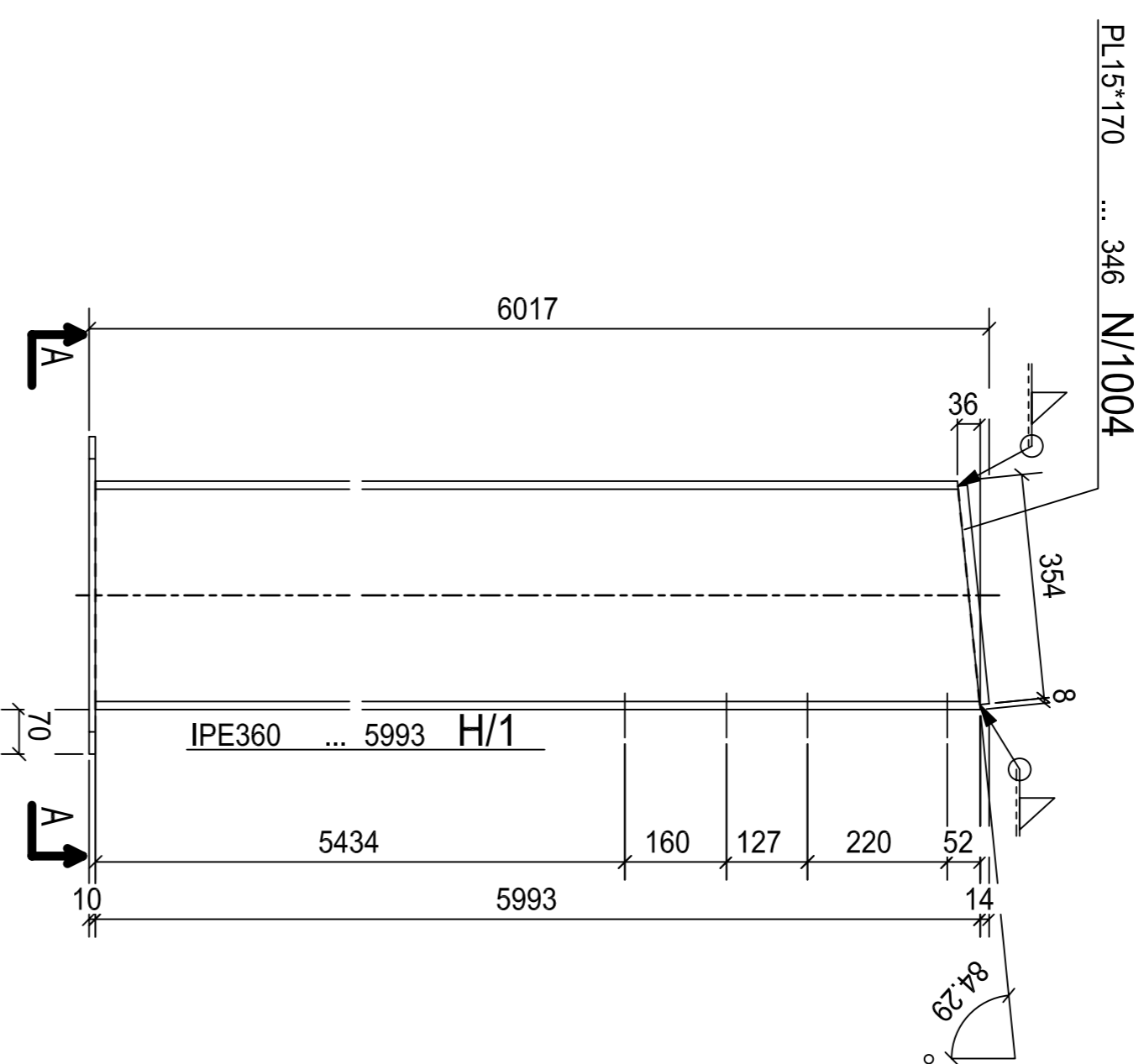


POS.NO./AXIS	
H/1	3/A
H/1	3/C

Item List		Part	H/1	Quantity	2
Position-No.	Profile	Material	Quantity	Length	Weight per Piece
H/1	IPE360	S235JRG2	1	5992.9	342.0
N/1002	PL10*310	S235JRG2	1	500.0	12.2
N/1004	PL15*170	S235JRG2	1	345.8	6.9
Total Weight in kg					361.1



NOTE:

- All dimensions are in "mm" unless otherwise indicated.
- Elevation ± 0.00 is equivalent to actual site elevation.
- Welding quality according to AWS D1.1.
- Procedure for welding: Hand-held electrode welding.
- All dimensions and information have to be checked at the building site. In case of discrepancy, the engineer must be informed before execution or consult with the designer.
- Do not scale dimensions from drawings, the contractor shall request, from the architect, necessary dimensions not shown on the drawings.
- Contractor is to confirm with architect as to where exposed welds are to be ground flush / smooth.
- Provide temporary bracing to maintain stability of steelwork during construction.

INDICATION FOR WELDING			
Thickness of the filler weld a			
All not indicated welds a=4mm!			
Simplification	Indication		

REFERENCE DRAWINGS

DRW - No.: DESCRIPTION:

STRUCTURAL DESIGN	ATTTA	ATTTA - Structural Engineering & Consulting Co., Ltd.
DRAWING KIND	Steel Drawing	CONSTRUCTION STAGE
PLANNING STAGE	DESIGNATION	PROJECT
	FABRIC	OFFICE BUILDING
	H1 Girder	

No.	REVISION	DESCRIPTION
e		
d		
c		
b		
a		

NAME	DATE	NAME	DATE
PREPARED,	CHANGED,	CHECKED	

PROJECT No.	ORIG. SIZE	ORIG. SCALE	DRAWING No.	REV.
XXX	A2	1:10	XXX	